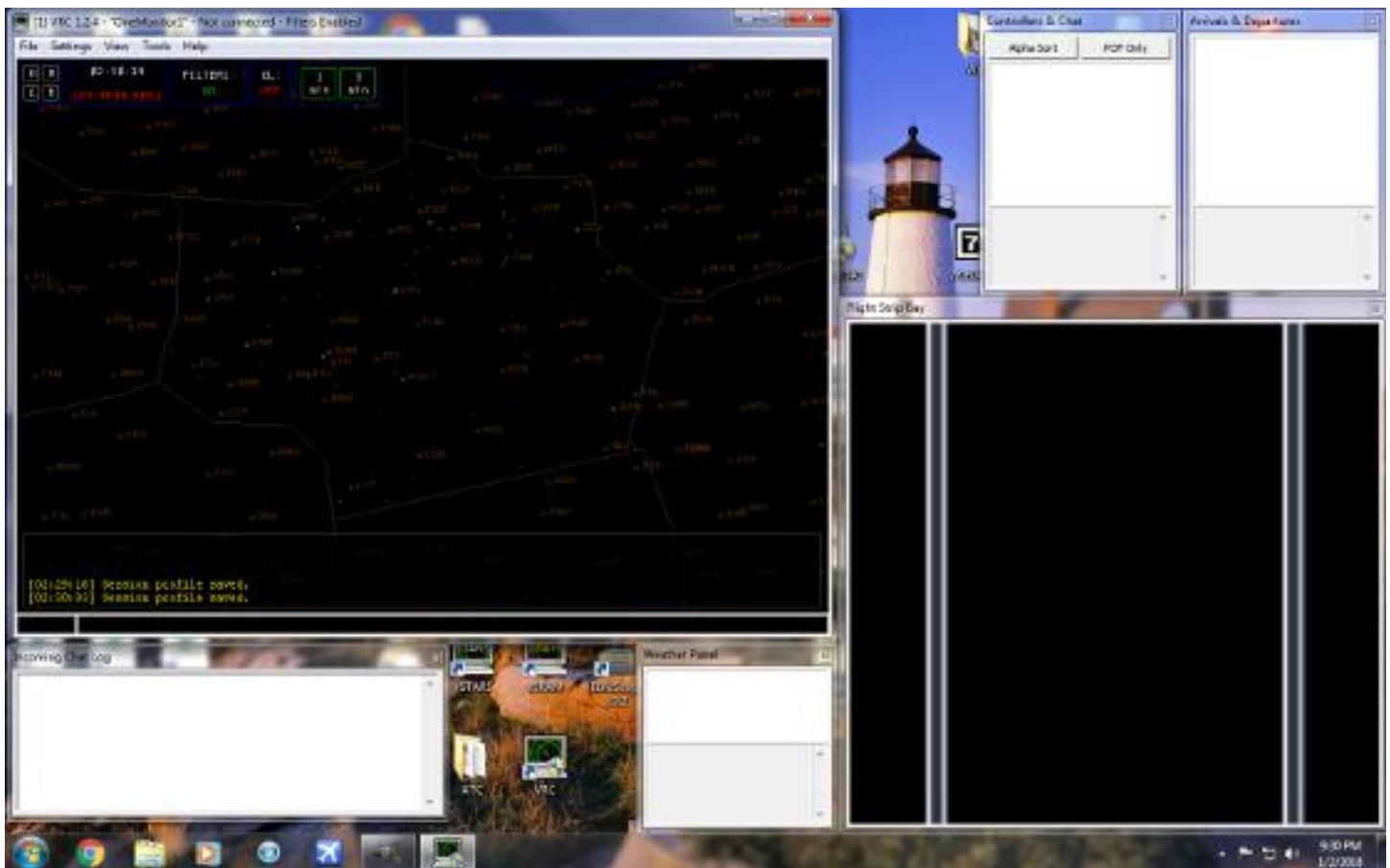


Possible One Monitor Layouts for VRC

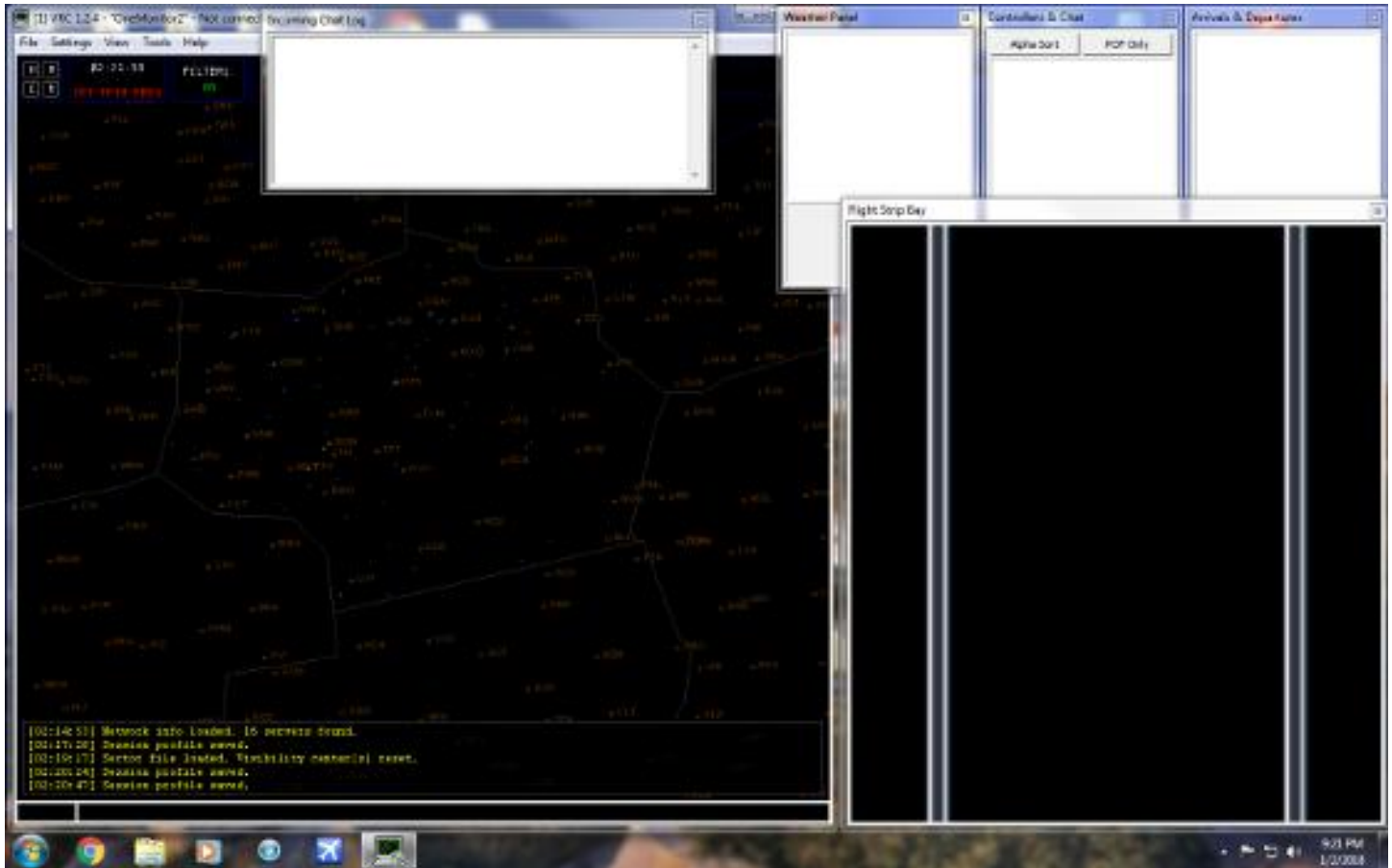
There are a couple of things to remember when dealing with VRC. First, the primary window (window 1) is subservient to all other windows. So if another window is moved on top of the primary window they will block what is happening on window 1. The second is that all other windows (Controller & Chat, Chat Boxes, Flight Strip Bay, etc.) besides View windows can be “rolled up” like a window shade by double-clicking on the window header. Double-clicking a view window makes it full screen. Also, the other windows will lay over top of each other, whichever one is selected as the active window appearing on top. This is good but can also present a problem. If some portion of one window does not extend beyond the edge of another window and you select the larger window, it will completely hide the smaller window. Then you have to ‘roll up’ the larger window to find the smaller one.

I have created two examples of how you can position windows on the screen and still be able to have everything you need without interfering with the other windows. Keeping in mind the points listed above, you can position your windows as seen in example 1. In this example, no portion of any window lays over another, however you could increase the size of your Flight Strip Bay if necessary so long as you don’t extend above the header bar of your Controllers & Chat and Arrivals & Departures windows. In that case, if you needed information from one of those windows simply click on the header bar and it will appear on top of the Flight Strip Bay until you click on the Flight Strip Bay which again brings it back on top.



The next image has things rearranged slightly. This one gives you a larger Primary window. In this example you have to put the Incoming Chat window over the Primary window’s header bar. Normally it would be ‘rolled up’ so that it does not obscure the screen but could be opened by double-clicking if you needed to read an incoming

message. You will also notice that a portion of the Weather window lays over a small area of the Primary window. This in itself would likely not create any problems except that it covers your 'X' in the top right corner for closing out VRC. Not to worry, you can 'roll up' the Weather window or simple select Exit from the File menu. And again, you can still resize the Flight Strip Bay if needed.



I hope this provides some possible solutions to the Real Estate problem when it comes to screen management. And of course, you may take some hints from this and develop your own strategy.